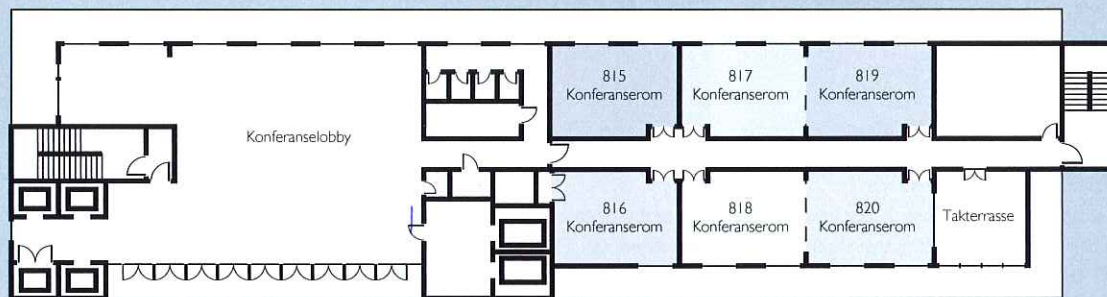


Lobby etasje



8. etasje



	Middag og bankett	Bankett	Klasserom	Kino	U-bord	Styremøte	Mottakelse	Tak høyde	Lengde og bredde	m ²	Der høyde	Der bredde	Stikkontakter	Belysning	Flernyutak	Telefon	Skjerm tilkobling	Simultolk system
Konferanserom 815	-	-	-	-	-	12	12	2,90 m	7 x 5,2 m	35	-	-	✓	✓	✓	✓	✓	✓
Konferanserom 816	-	-	-	-	-	12	12	2,90 m	7 x 5,2 m	35	-	-	✓	✓	✓	✓	✓	✓
Konferanserom 817	-	-	-	-	-	12	12	2,90 m	7 x 5,2 m	35	-	-	✓	✓	✓	✓	✓	✓
Konferanserom 818	-	-	-	-	-	12	12	2,90 m	7 x 5,2 m	35	-	-	✓	✓	✓	✓	✓	✓
Konferanserom 819	-	-	-	-	-	6	6	2,90 m	7 x 5,2 m	35	-	-	✓	✓	✓	✓	✓	✓
Konferanserom 820	-	-	-	-	-	6	6	2,90 m	7 x 5,2 m	35	-	-	✓	✓	✓	✓	✓	✓
Konferanserom 215	40	-	24	46	18	15	50	2,90 m	7,1 x 6,7 m	48	-	-	✓	✓	✓	✓	✓	✓
Konferanserom 216	40	-	24	46	18	15	50	2,90 m	7,1 x 6,7 m	48	-	-	✓	✓	✓	✓	✓	✓
Konferanserom 217	40	-	24	46	18	15	50	2,90 m	7,1 x 6,7 m	48	-	-	✓	✓	✓	✓	✓	✓
Konferanserom 218	40	-	24	46	18	15	50	2,90 m	7,1 x 6,7 m	48	-	-	✓	✓	✓	✓	✓	✓
Konferanserom 219	50	50	30	60	34	30	70	2,90 m	10,5 x 6,7 m	73	-	-	✓	✓	✓	✓	✓	✓
Diamant salen 1	60	60	32	72	28	20	100	4,40 m	10,6 x 7 m	76	-	-	✓	✓	✓	✓	✓	✓
Diamant salen 2	60	60	32	72	28	20	100	4,40 m	10,6 x 7 m	76	-	-	✓	✓	✓	✓	✓	✓
Diamant salen 3	90	80	60	108	50	40	150	4,40 m	10,6 x 10,7 m	111	-	-	✓	✓	✓	✓	✓	✓
Diamant salen 1+2+3	210	200	124	252	126	80	350	4,40 m	10,6 x 24,7 m	263	-	-	✓	✓	✓	✓	✓	✓
Blå Grotte	300	300	220	440	-	-	500	10,9 m	19,9 x 17,7 m	390	-	-	✓	✓	✓	✓	✓	✓
Scene Blå Grotte	60	30	36	50	34	30	60	9,2 m	13,3 x 14,3 m	109	-	-	✓	✓	✓	✓	✓	✓
Scene Speilet	60	30	36	50	34	30	60	7,4 m	7,7 x 8,4 m	66	-	-	✓	✓	✓	✓	✓	✓
Sal Speilet	60	30	36	50	34	30	60	6,4 m	10,5 x 8,4 m	154	-	-	✓	✓	✓	✓	✓	✓